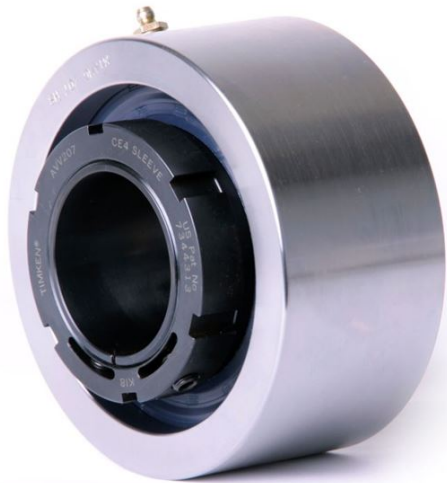


loyal Bearing Housed Units-Double V-Lock Cartridge Block | QVVMC20V303S



Bearing No. QVVMC20V303S

| | |
|---------------------------|--|
| Weight | Imperial |
| Bearing Number | 4.24 |
| Housing Construction | 2.85 |
| UPC Code | 32 lb14.5 Kg |
| Shaft Size Type | 0883450150972 0883450151122 0883450159005 0883450160407 0883450180184 0883450181259 0883450199667 08 |
| Full Timken Part Number | 0.0030 in0.076 mm |
| Locking Style | 3-3/16 in |
| Y2 - Geometry Factor | 0.0043 in0.109 mm |
| Y1 - Geometry Factor | 0.0055 in0.140 mm |
| Shaft Tolerance | 2000 rpm |
| Shaft Size | 1200 rpm |
| Pre Install Clearance Min | 900 rpm |
| Pre Install Clearance Max | Double V-Lock |