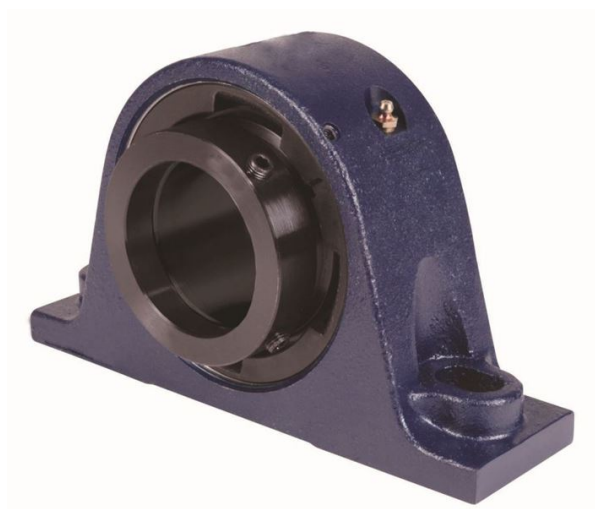


royal Bearing Housed Units-Eccentric Two-Bolt Pillow Block | QMSN20J400S



Bearing No. QMSN20J400S

| | |
|---------------------------|--|
| Weight | Imperial |
| Bearing Number | 4.24 |
| Housing Construction | 2.85 |
| UPC Code | 79 lb35.9 Kg |
| Shaft Size Type | 0883450099028 0883450099035 0883450099059 0883450099066 0883450099073 0883450099080 0883450099097 08 |
| Full Timken Part Number | 0.0030 in0.076 mm |
| Locking Style | 4 in |
| Y2 - Geometry Factor | 0.0030 in0.075 mm |
| Y1 - Geometry Factor | 0.0047 in0.120 mm |
| Shaft Tolerance | 2000 rpm |
| Shaft Size | 1200 rpm |
| Pre Install Clearance Min | 900 rpm |
| Pre Install Clearance Max | Eccentric |