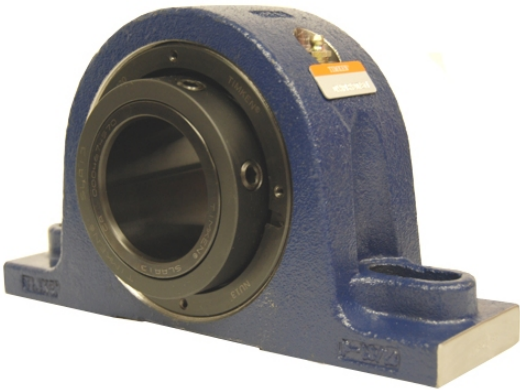


ing Housed Units-Single Concentric Two-Bolt Pillow Block | QAP10A050S



Bearing No. QAP10A050S

Weight	Metric
Bearing Number	4.23
Housing Construction	2.84
UPC Code	13 lb5.9 Kg
Shaft Size Type	0883450044202 0883450044219 0883450044233 0883450044240 0883450044257 0883450044264 0883450044271 08
Full Timken Part Number	0.0015 in0.038 mm
Locking Style	50 mm
Y2 - Geometry Factor	0.0016 in0.040 mm
Y1 - Geometry Factor	0.0026 in0.065 mm
Shaft Tolerance	4200 rpm
Shaft Size	2400 rpm
Pre Install Clearance Min	1800 rpm
Pre Install Clearance Max	Single Concentric