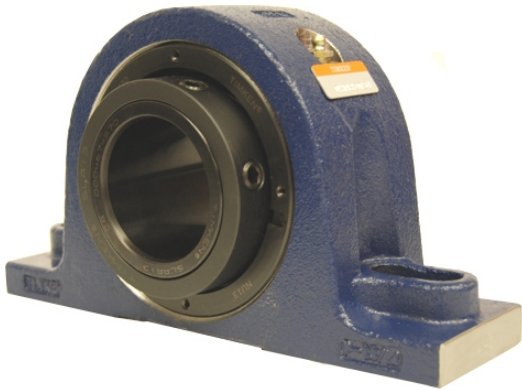


loyal g Housing Units-Single Concentric Two-Bolt Pillow Block | QAPL13A208S



Bearing No. QAPL13A208S

Weight	Imperial
Bearing Number	4.15
Housing Construction	2.79
UPC Code	22.00 lb10.00 Kg
Shaft Size Type	0883450047609 0883450047616 0883450047630 0883450047647 0883450047654 0883450047661 0883450047678 08
Full Timken Part Number	0.0015 in0.038 mm
Locking Style	2-1/2 in
Y2 - Geometry Factor	0.0016 in0.040 mm
Y1 - Geometry Factor	0.0026 in0.065 mm
Shaft Tolerance	3200 rpm
Shaft Size	1800 rpm
Pre Install Clearance Min	1500 rpm
Pre Install Clearance Max	Single Concentric