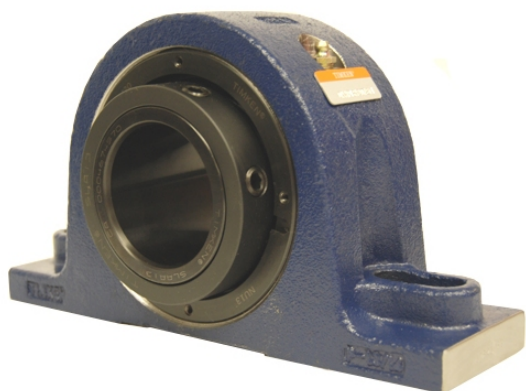


loyal g Housed Units-Single Concentric Two-Bolt Pillow Block | QAPL15A211S



Bearing No. QAPL15A211S

Weight	Imperial
Bearing Number	4.67
Housing Construction	3.14
UPC Code	28 lb12.7 Kg
Shaft Size Type	0883450298568 0883450298575 0883450298582 0883450298599 0883450298605 0883450298612 0883450298629 08
Full Timken Part Number	0.0020 in0.051 mm
Locking Style	2-11/16 in
Y2 - Geometry Factor	0.0020 in0.050 mm
Y1 - Geometry Factor	0.0031 in0.080 mm
Shaft Tolerance	2900 rpm
Shaft Size	1600 rpm
Pre Install Clearance Min	1300 rpm
Pre Install Clearance Max	Single Concentric