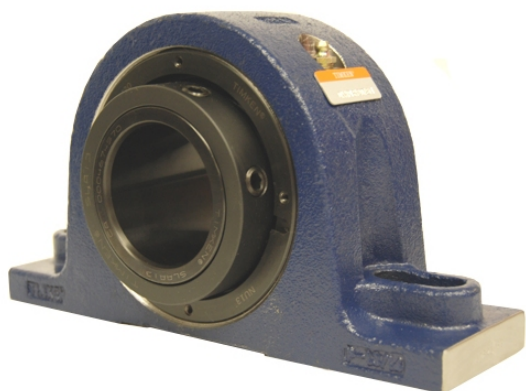


loyal g Housed Units-Single Concentric Two-Bolt Pillow Block | QAPL20A100S



Bearing No. QAPL20A100S

Weight	Metric
Bearing Number	4.24
Housing Construction	2.85
UPC Code	59.0 lb26.8 Kg
Shaft Size Type	0883450298803 0883450298810 0883450298827 0883450298834 0883450298841 0883450298858 0883450298865 08
Full Timken Part Number	0.0030 in0.076 mm
Locking Style	100 mm
Y2 - Geometry Factor	0.0030 in0.075 mm
Y1 - Geometry Factor	0.0047 in0.120 mm
Shaft Tolerance	2000 rpm
Shaft Size	1200 rpm
Pre Install Clearance Min	900 rpm
Pre Install Clearance Max	Single Concentric