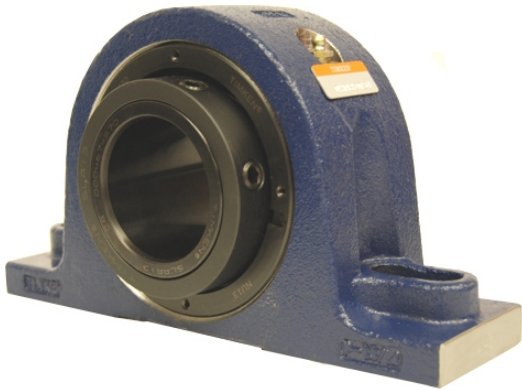


loyal g Housed Units-Single Concentric Two-Bolt Pillow Block | QAPL20A315S



Bearing No. QAPL20A315S

| | |
|---------------------------|--|
| Weight | Imperial |
| Bearing Number | 4.24 |
| Housing Construction | 2.85 |
| UPC Code | 59.0 lb26.8 Kg |
| Shaft Size Type | 0883450048309 0883450048316 0883450048330 0883450048347 0883450048354 0883450048361 0883450048378 08 |
| Full Timken Part Number | 0.0030 in0.076 mm |
| Locking Style | 3-15/16 in |
| Y2 - Geometry Factor | 0.0030 in0.075 mm |
| Y1 - Geometry Factor | 0.0047 in0.120 mm |
| Shaft Tolerance | 2000 rpm |
| Shaft Size | 1200 rpm |
| Pre Install Clearance Min | 900 rpm |
| Pre Install Clearance Max | Single Concentric |