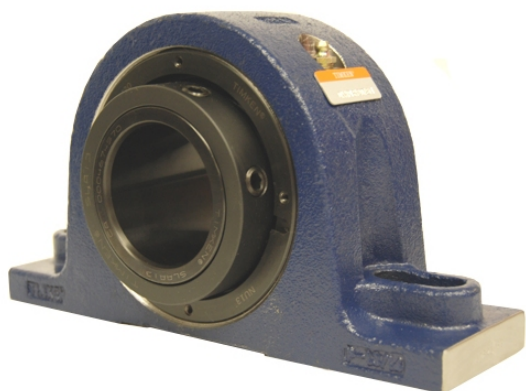


loyal g Housed Units-Single Concentric Two-Bolt Pillow Block | QASN15A212S



Bearing No. QASN15A212S

Weight	Imperial
Bearing Number	4.67
Housing Construction	3.14
UPC Code	46.0 lb20.9 Kg
Shaft Size Type	0883450032032 0883450354288 0883450354295 0883450354301 0883450354318 0883450354325 0883450354332 08
Full Timken Part Number	0.0020 in0.051 mm
Locking Style	2-3/4 in
Y2 - Geometry Factor	0.0020 in0.050 mm
Y1 - Geometry Factor	0.0031 in0.080 mm
Shaft Tolerance	2900 rpm
Shaft Size	1600 rpm
Pre Install Clearance Min	1300 rpm
Pre Install Clearance Max	Single Concentric