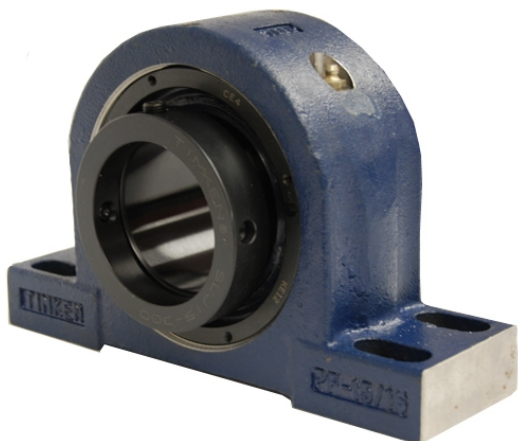


royal Bearing Housed Units-Eccentric Four-Bolt Pillow Block | QMPF30J150S



Bearing No. QMPF30J150S

Weight	Metric
Bearing Number	3.10
Housing Construction	2.08
UPC Code	250 lb113.4 Kg
Shaft Size Type	0883450156004 0883450156127 0883450156202 0883450156288 0883450156363 0883450156738 0883450156851 08
Full Timken Part Number	0.0050 in0.127 mm
Locking Style	150 mm
Y2 - Geometry Factor	0.0043 in0.110 mm
Y1 - Geometry Factor	0.0067 in0.170 mm
Shaft Tolerance	950 rpm
Shaft Size	650 rpm
Pre Install Clearance Min	350 rpm
Pre Install Clearance Max	Eccentric