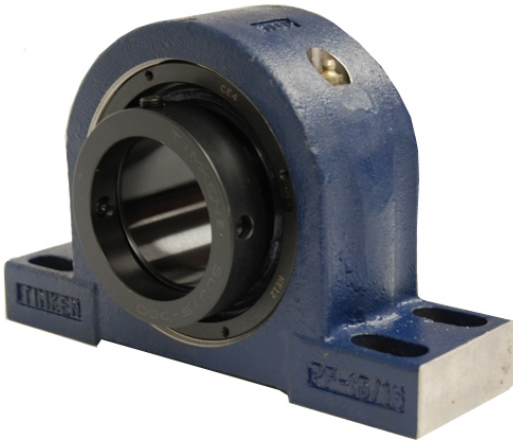


loyal Bearing Housed Units-Eccentric Four-Bolt Pillow Block | QMPG30J507S



Bearing No. QMPG30J507S

Weight	Imperial
Bearing Number	3.10
Housing Construction	2.08
UPC Code	250 lb113.4 Kg
Shaft Size Type	0883450033220 0883450033237 0883450139977 0883450139984 0883450139991 0883450140003 0883450140034 08
Full Timken Part Number	0.0050 in0.127 mm
Locking Style	5-7/16 in
Y2 - Geometry Factor	0.0043 in0.110 mm
Y1 - Geometry Factor	0.0067 in0.170 mm
Shaft Tolerance	950 rpm
Shaft Size	650 rpm
Pre Install Clearance Min	350 rpm
Pre Install Clearance Max	Eccentric