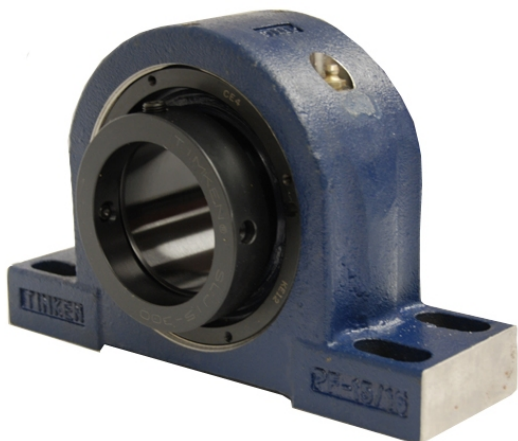


loyal Bearing Housed Units-Eccentric Four-Bolt Pillow Block | QMPR15J215S



Bearing No. QMPR15J215S

Weight	Imperial
Bearing Number	4.67
Housing Construction	3.14
UPC Code	27 lb12.2 Kg
Shaft Size Type	0883450090124 0883450090131 0883450090155 0883450090162 0883450090179 0883450090186 0883450090193 08
Full Timken Part Number	0.0020 in0.051 mm
Locking Style	2-15/16 in
Y2 - Geometry Factor	0.0020 in0.050 mm
Y1 - Geometry Factor	0.0031 in0.080 mm
Shaft Tolerance	2900 rpm
Shaft Size	1600 rpm
Pre Install Clearance Min	1300 rpm
Pre Install Clearance Max	Eccentric