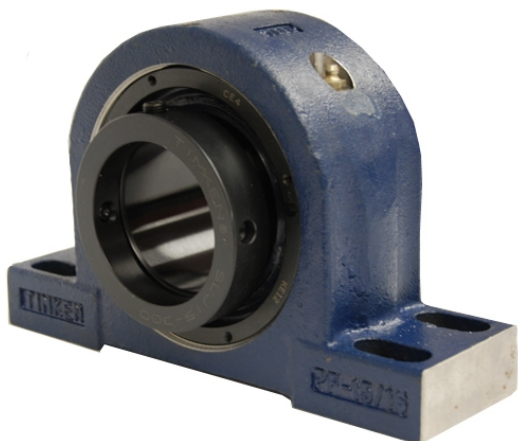


# royal Bearing Housed Units-Eccentric Four-Bolt Pillow Block | QMPR18J308S



## Bearing No. QMPR18J308S

Weight	Imperial
Bearing Number	4.31
Housing Construction	2.90
UPC Code	49.0 lb22.2 Kg
Shaft Size Type	0883450090827 0883450090834 0883450090858 0883450090865 0883450090872 0883450090889 0883450090896 08
Full Timken Part Number	0.0030 in0.076 mm
Locking Style	3-1/2 in
Y2 - Geometry Factor	0.0024 in0.060 mm
Y1 - Geometry Factor	0.0039 in0.100 mm
Shaft Tolerance	2400 rpm
Shaft Size	1400 rpm
Pre Install Clearance Min	1000 rpm
Pre Install Clearance Max	Eccentric