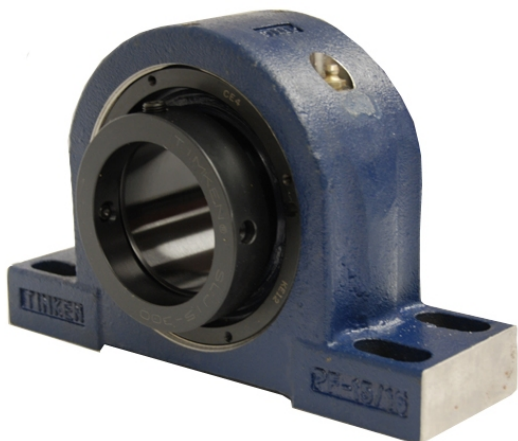


# royal Bearing Housed Units-Eccentric Four-Bolt Pillow Block | QMPX13J060S



## Bearing No. QMPX13J060S

Weight	Metric
Bearing Number	4.15
Housing Construction	2.79
UPC Code	23 lb10.40 Kg
Shaft Size Type	0883450034692 0883450034722 0883450252614 0883450253031 0883450262484 0883450262491 0883450262507 08
Full Timken Part Number	0.0015 in0.038 mm
Locking Style	60 mm
Y2 - Geometry Factor	0.0016 in0.040 mm
Y1 - Geometry Factor	0.0026 in0.065 mm
Shaft Tolerance	3200 rpm
Shaft Size	1800 rpm
Pre Install Clearance Min	1500 rpm
Pre Install Clearance Max	Eccentric