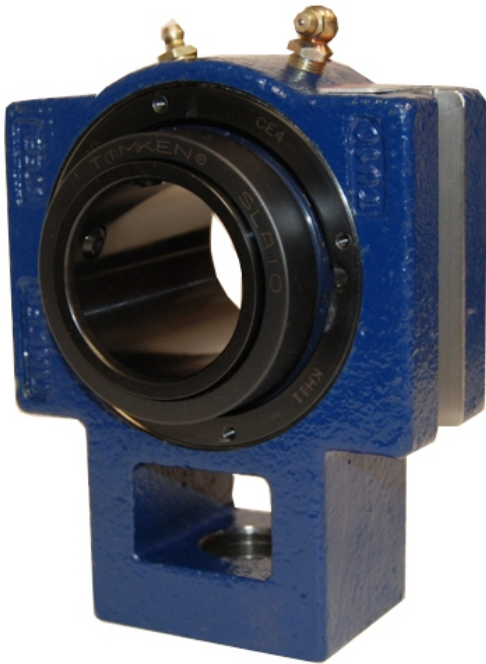


Bearing Housed Units-Single Concentric Take-Up Block | QATU10A115S



Bearing No. QATU10A115S

Weight	Imperial
Bearing Number	4.23
Housing Construction	2.84
UPC Code	17.0 lb7.7 Kg
Shaft Size Type	0883450049702 0883450049719 0883450049733 0883450049740 0883450049757 0883450049764 0883450049771 08
Full Timken Part Number	0.0015 in0.038 mm
Locking Style	1-15/16 in
Y2 - Geometry Factor	0.040 mm0.0016 in
Y1 - Geometry Factor	0.065 mm0.0026 in
Shaft Tolerance	4200 rpm
Shaft Size	2400 rpm
Pre Install Clearance Min	1800 rpm
Pre Install Clearance Max	Single Concentric