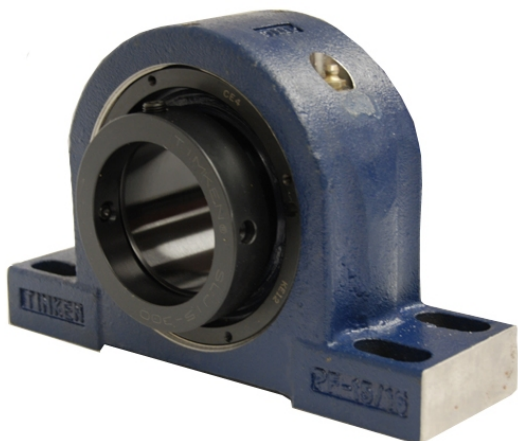


# royal Bearing Housed Units-Eccentric Four-Bolt Pillow Block | QMPX20J400S



## Bearing No. QMPX20J400S

Weight	Imperial
Bearing Number	4.24
Housing Construction	2.85
UPC Code	67 lb30.400 Kg
Shaft Size Type	0883450094627 0883450094634 0883450094658 0883450094665 0883450094672 0883450094689 0883450094696 08
Full Timken Part Number	0.0030 in0.076 mm
Locking Style	4 in
Y2 - Geometry Factor	0.0030 in0.075 mm
Y1 - Geometry Factor	0.0047 in0.120 mm
Shaft Tolerance	2000 rpm
Shaft Size	1200 rpm
Pre Install Clearance Min	900 rpm
Pre Install Clearance Max	Eccentric