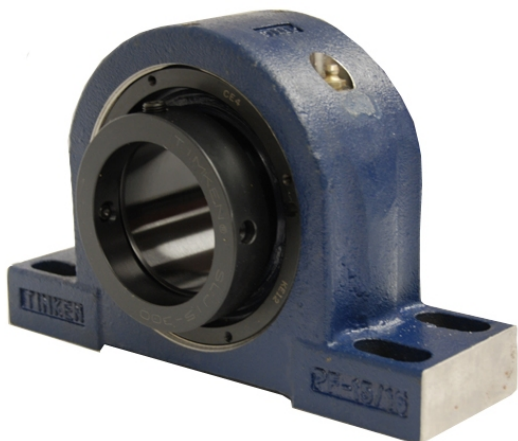


royal Bearing Housed Units-Eccentric Four-Bolt Pillow Block | QMPX30J507S



Bearing No. QMPX30J507S

Weight	Imperial
Bearing Number	3.10
Housing Construction	2.08
UPC Code	250 lb113.4 Kg
Shaft Size Type	0883450095228 0883450095235 0883450095259 0883450095266 0883450095273 0883450095280 0883450095297 08
Full Timken Part Number	0.0050 in0.127 mm
Locking Style	5-7/16 in
Y2 - Geometry Factor	0.0043 in0.110 mm
Y1 - Geometry Factor	0.0067 in0.170 mm
Shaft Tolerance	950 rpm
Shaft Size	650 rpm
Pre Install Clearance Min	350 rpm
Pre Install Clearance Max	Eccentric