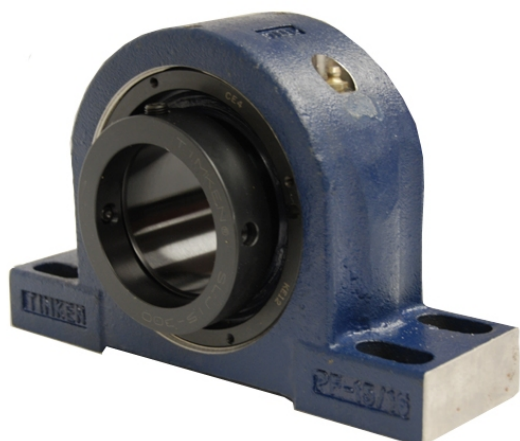


royal Bearing Housed Units-Eccentric Four-Bolt Pillow Block | QMPX30J515S



Bearing No. QMPX30J515S

Weight	Imperial
Bearing Number	3.10
Housing Construction	2.08
UPC Code	250 lb113.4 Kg
Shaft Size Type	0883450095426 0883450095433 0883450095457 0883450095464 0883450095471 0883450095488 0883450095495 08
Full Timken Part Number	0.0050 in0.127 mm
Locking Style	5-15/16 in
Y2 - Geometry Factor	0.0043 in0.110 mm
Y1 - Geometry Factor	0.0067 in0.170 mm
Shaft Tolerance	950 rpm
Shaft Size	650 rpm
Pre Install Clearance Min	350 rpm
Pre Install Clearance Max	Eccentric