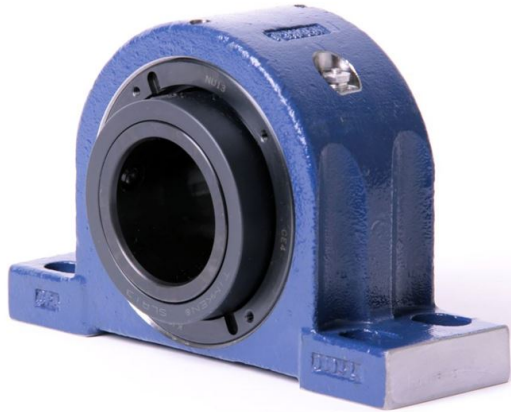


loyal g Housing Units-Single Concentric Four-Bolt Pillow Block | QAPF15A212S



Bearing No. QAPF15A212S

Weight	Imperial
Bearing Number	4.67
Housing Construction	3.14
UPC Code	27 lb12.2 Kg
Shaft Size Type	0883450331685 0883450331692 0883450331708 0883450331715 0883450331722 0883450331739 0883450331746 08
Full Timken Part Number	0.0020 in0.051 mm
Locking Style	2-3/4 in
Y2 - Geometry Factor	0.0020 in0.050 mm
Y1 - Geometry Factor	0.0031 in0.080 mm
Shaft Tolerance	2900 rpm
Shaft Size	1600 rpm
Pre Install Clearance Min	1300 rpm
Pre Install Clearance Max	Single Concentric