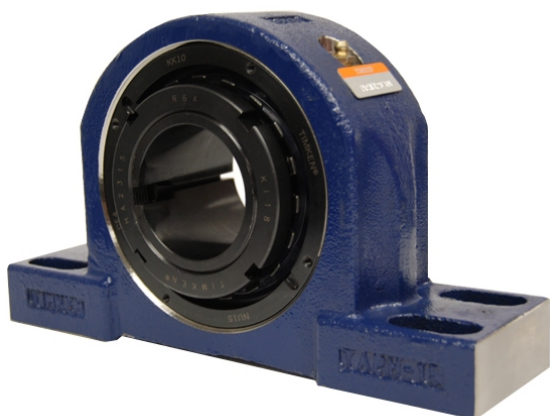


# Large Housing Units-Tapered Adapter Four-Bolt Pillow Block | TAPG11K050S



## Bearing No. TAPG11K050S

Weight	Metric
Bearing Number	4.40
Housing Construction	2.95
UPC Code	19 lb8.6 Kg
Shaft Size Type	0883450126373 0883450126380 0883450126403 0883450126410 0883450126427 0883450126434 0883450126441 08
Full Timken Part Number	0.0030 in0.076 mm
Locking Style	50 mm
Y2 - Geometry Factor	0.0030 in0.076 mm
Y1 - Geometry Factor	0.0037 in0.094 mm
Shaft Tolerance	0.0015 in0.038 mm
Shaft Size	3800 rpm
Pre Install Clearance Min	2200 rpm
Pre Install Clearance Max	1800 rpm