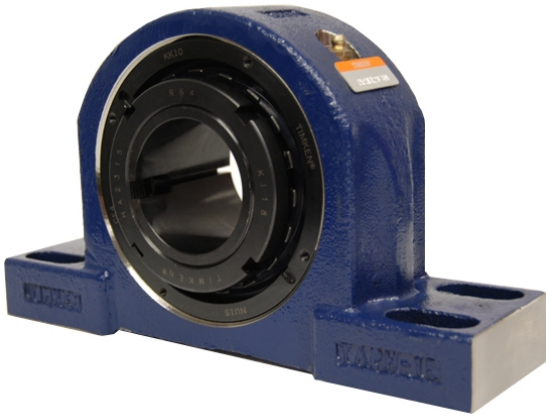


Large Housing Units-Tapered Adapter Four-Bolt Pillow Block | TAPG15K207S



Bearing No. TAPG15K207S

Weight	Imperial
Bearing Number	4.67
Housing Construction	3.14
UPC Code	29 lb13.20 Kg
Shaft Size Type	0883450127073 0883450127080 0883450127103 0883450127110 0883450127127 0883450127134 0883450127141 08
Full Timken Part Number	0.0035 in0.089 mm
Locking Style	2-7/16 in
Y2 - Geometry Factor	0.0037 in0.094 mm
Y1 - Geometry Factor	0.0047 in0.119 mm
Shaft Tolerance	0.0017 in0.043 mm
Shaft Size	2900 rpm
Pre Install Clearance Min	1600 rpm
Pre Install Clearance Max	1300 rpm