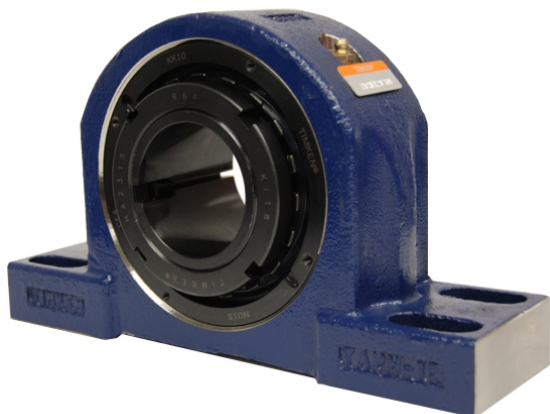


Large Housing Units-Tapered Adapter Four-Bolt Pillow Block | TAPG20K090S



Bearing No. TAPG20K090S

Weight	Metric
Bearing Number	4.24
Housing Construction	2.85
UPC Code	70.0 lb31.8 Kg
Shaft Size Type	0883450127578 0883450127585 0883450127608 0883450127615 0883450127622 0883450127639 0883450127646 08
Full Timken Part Number	0.0040 in0.102 mm
Locking Style	90 mm
Y2 - Geometry Factor	0.0043 in0.109 mm
Y1 - Geometry Factor	0.0055 in0.140 mm
Shaft Tolerance	0.0020 in0.051 mm
Shaft Size	2000 rpm
Pre Install Clearance Min	1200 rpm
Pre Install Clearance Max	900 rpm